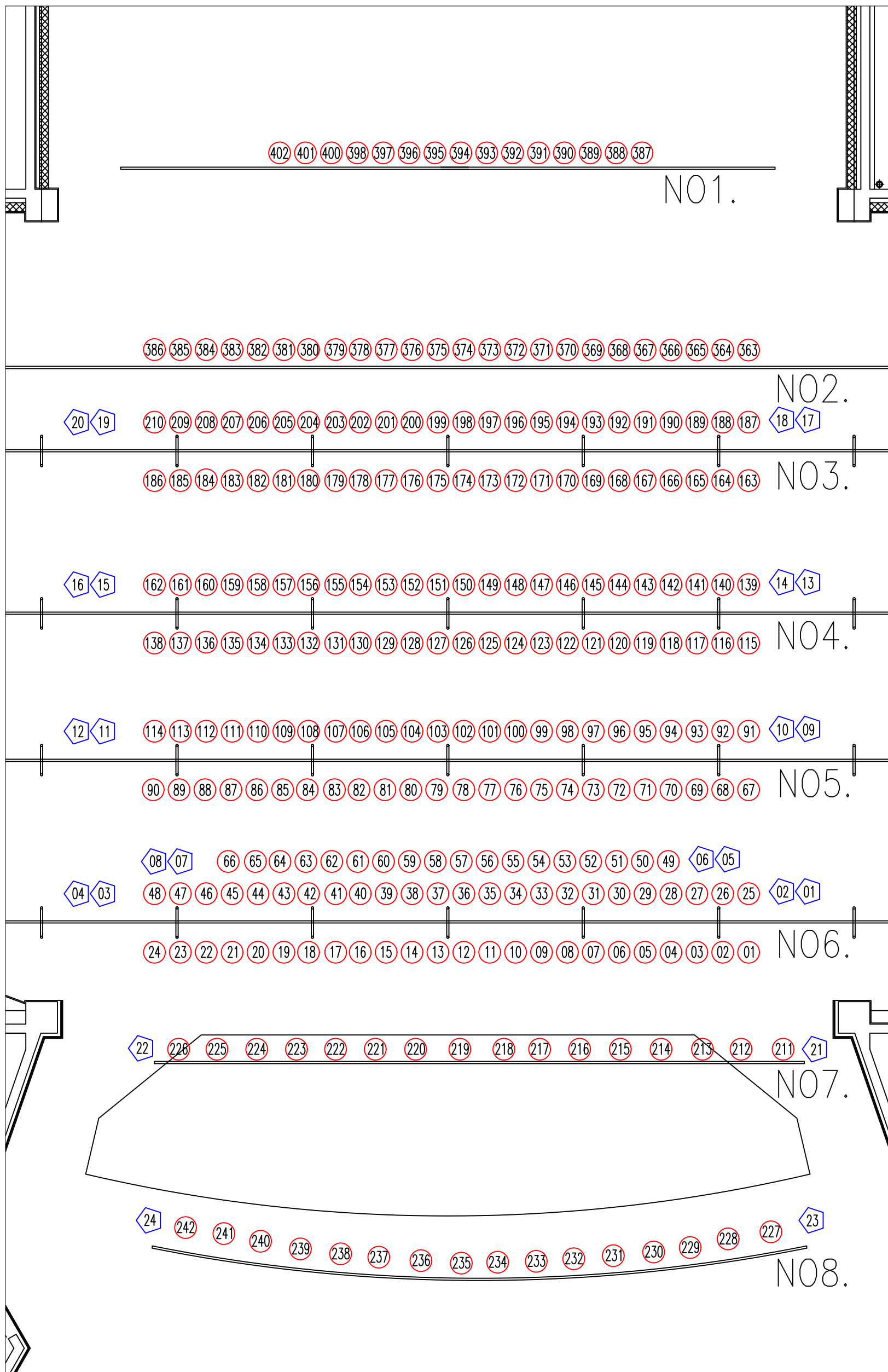


JAC Circuit Plot 1 상부



| | |
|-------------------|-----------|
| NO1.Rear Batten | |
| Dimmer | 387 ~ 402 |
| NO2.CYC Batten | |
| Dimmer | 363 ~ 386 |
| NO3.Light Bridge4 | |
| Dimmer | 163 ~ 210 |
| RD | 17 ~ 20 |
| NO4.Light Bridge3 | |
| Dimmer | 115 ~ 162 |
| RD | 13 ~ 16 |
| NO5.Light Bridge2 | |
| Dimmer | 67 ~ 114 |
| RD | 9 ~ 12 |
| NO6.Light Bridge1 | |
| Dimmer | 1 ~ 66 |
| RD | 1 ~ 8 |
| NO7.Apron2 | |
| Dimmer | 211 ~ 226 |
| RD | 21 ~ 22 |
| NO8.Apron1 | |
| Dimmer | 227 ~ 242 |
| RD | 23 ~ 24 |

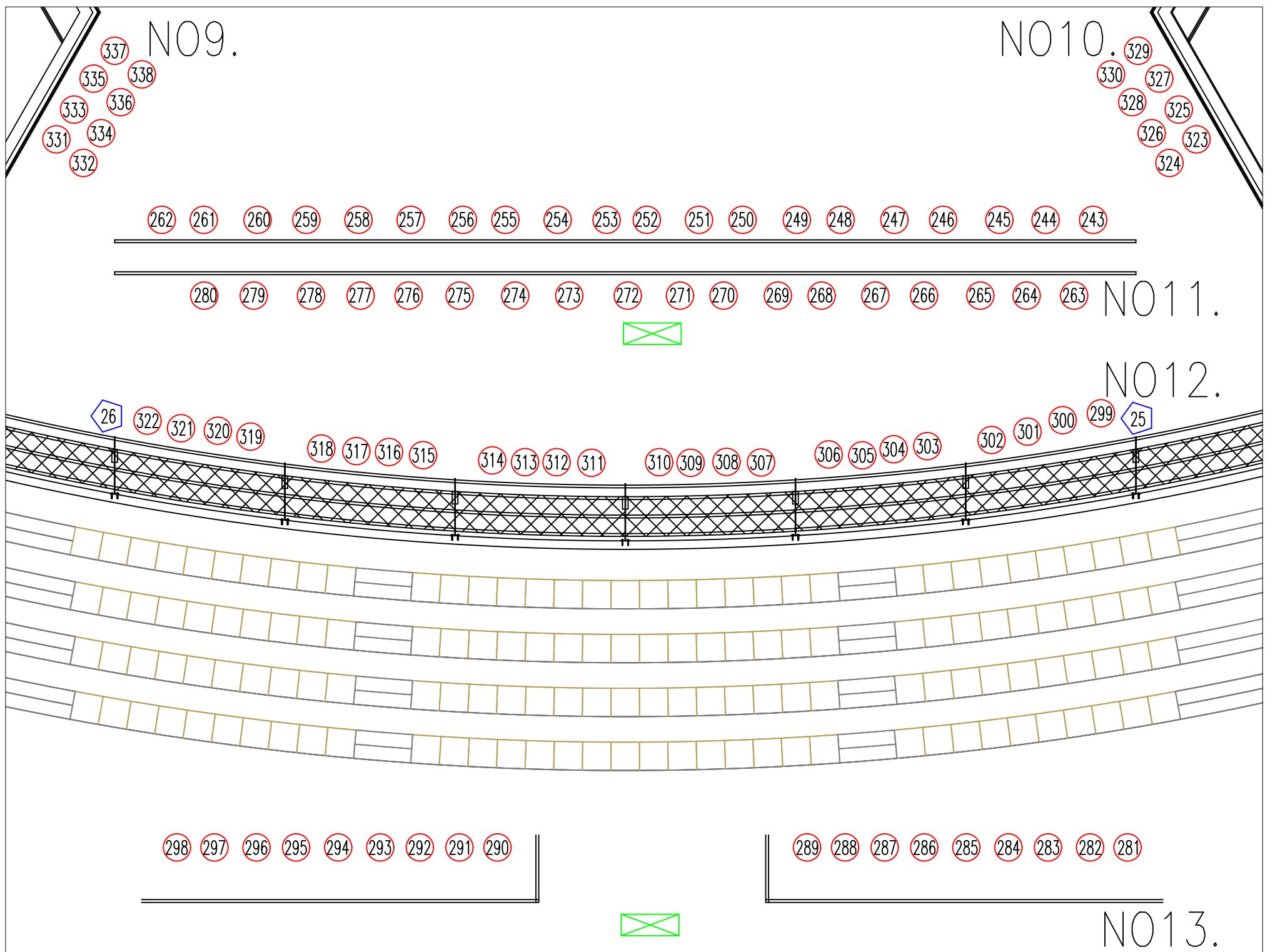
REMARK

Dimmer - 4kw, RD - 4kw

Dimmer - Direct로 변환가능. (회로당 2.5kw)

SYMBOL

- DIMMER
- ◇ REMOTE DIRECT



| | | | |
|------------------|-----------|--|-----------|
| | | JAC Circuit Plot 2 F.O.H | |
| NO09.SR BOX BOOM | | NO11.FOH1 | |
| Dimmer | 331 ~ 338 | Dimmer | 331 ~ 338 |
| | | Direct Panel 3상 4선 100A 1ea - 4kw Direct 3ea | |
| NO10.SL BOX BOOM | | NO12.BALCONY | |
| Dimmer | 323 ~ 330 | Dimmer | 299 ~ 322 |
| | | RD | 25 ~ 26 |
| | | 작업시, 안전용품(하네스) 착용필수 | |
| | | NO13.FOH2 | |
| Dimmer | 323 ~ 330 | Dimmer | 281 ~ 298 |
| | | Direct Panel 3상 4선 100A 1ea - 4kw Direct 3ea | |
| | | FOLLOW SPOT 3ea | |

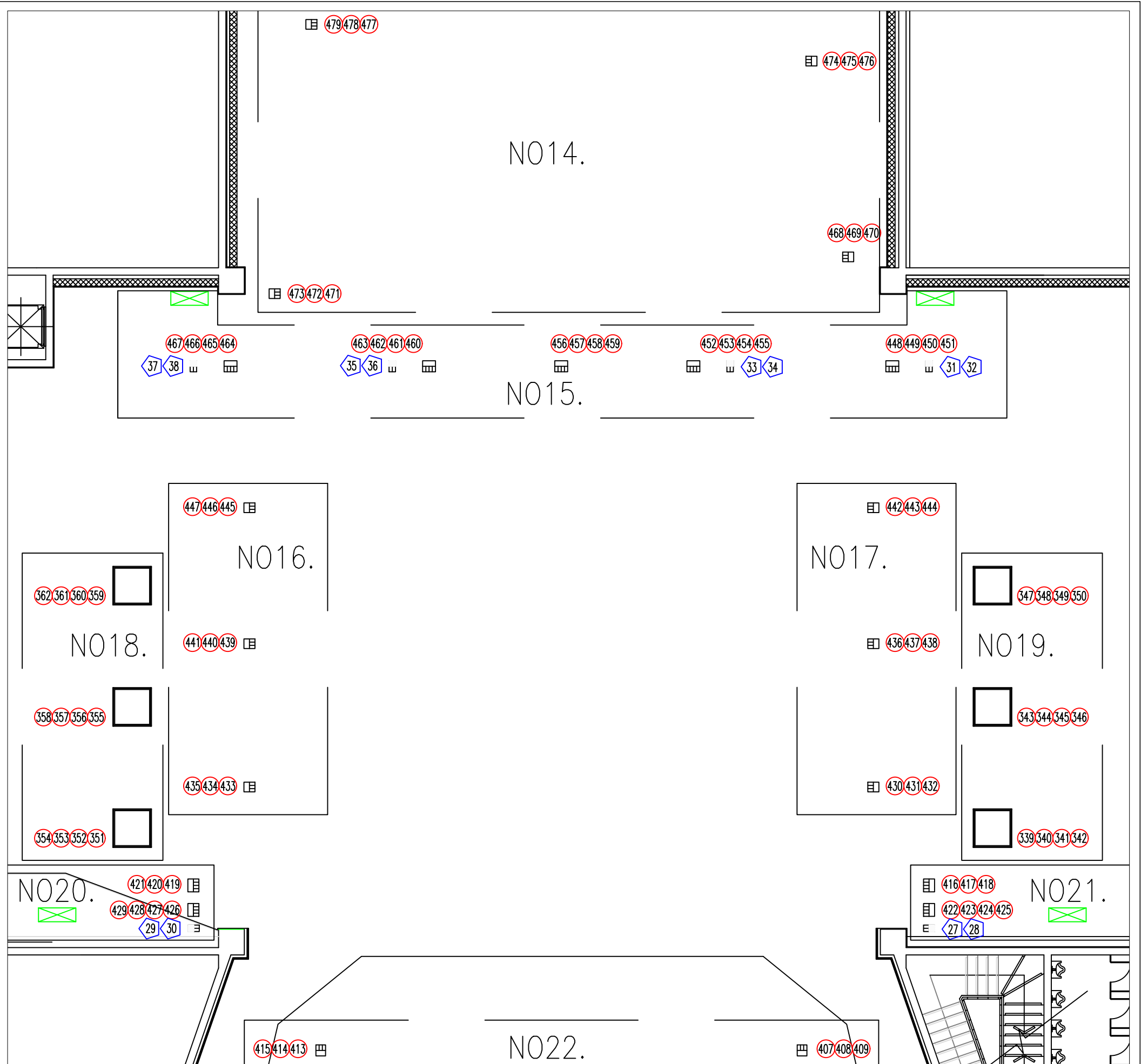
REMARK

Dimmer - 4kw, RD - 4kw

Dimmer - Direct로 변환가능. (회로당 2.5kw)

SYMBOL

- DIMMER
- REMOTE DIRECT
- DIRECT PANEL



| | | | | | | |
|-------------------------------------|---------------------------|-------------------------------------|--------------------------------------|---|--|------------------------|
| JAC Circuit Plot 3 FLOOR | NO16.SR FLOOR POCKET | | NO19.SL SIDE TOWER | | NO22.PIT FLOOR POCKET | |
| | Dimmer | 445 ~ 447 439 ~ 441 433 ~ 435 | Dimmer | 347 ~ 350 343 ~ 346 339 ~ 342 | Dimmer | 407 ~ 409 413 ~ 415 |
| | NO17.SL FLOOR POCKET | | NO20.DSR FLOOR POCKET | | NO15. | |
| | Dimmer | 442 ~ 444 436 ~ 438 430 ~ 432 | Dimmer | 419 ~ 421 426 ~ 429 | Direct Panel 3상 4선 100A 2ea Panel당 4kw Direct 4ea | |
| | Dimmer | 468 ~ 479 | RD | 29 ~ 30 | NO20. | |
| | NO15.UPSTAGE FLOOR POCKET | | NO18.SR SIDE TOWER | | Direct Panel 3상 4선 100A 1ea 4kw Direct 4ea | |
| Dimmer | 448 ~ 467 RD 31 ~ 38 | Dimmer | 359 ~ 362 355 ~ 358 351 ~ 354 | NO21.DSL FLOOR POCKET | | |
| | | Dimmer | 416 ~ 418 422 ~ 425 RD 27 ~ 28 | NO21. | | |
| | | | | Direct Panel 3상 4선 100A 1ea 4kw Direct 4ea | | |

REMARK

Dimmer - 4kw, RD - 4kw
 Dimmer - Direct로 변환가능. (회로당 2.5kw)

SYMBOL

- DIMMER
- REMOTE DIRECT
- DIRECT PANEL